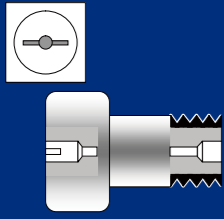


CAM FOLLOWERS

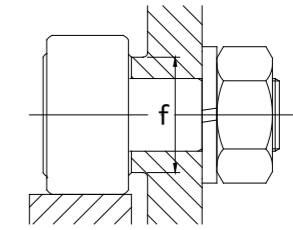
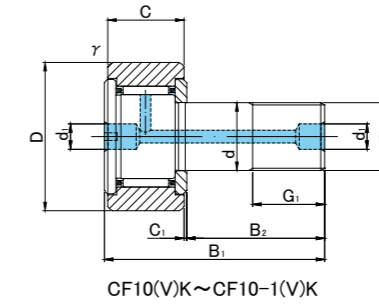
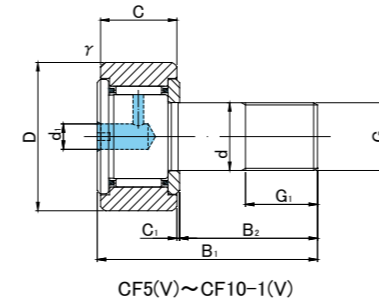
SCREWDRIVER SLOT HEAD



CF



CF.V



CF TYPE

Prepacked Grease

Stud diameter (mm)	Designation	Dimensions (mm)																	Basic dynamic load rating	Basic static load rating	Largest permissible load	Limiting speed *	Track load capacity		Max tightening torque	Mass
		Cylindrical outer ring				Crowned outer ring R250(CF5) R500(CF6 ~ CF10-1)				Other dimensions													Cylindrical outer ring N	Crowned outer ring N		
		Without seals	With seals	Without seals	With seals	D	C	d	G	G1	B1	B2	B3	C1	d1	d2	r _s min	f min					Cr N	Cor N		
5	CF 5	CF 5UU	CF 5R	CF 5UUR	13	9	5	M5×0.8	7.5	23	13	—	0.5	3.1	—	0.3	9.7	3 140	2 770	1 420	29 000	2 250	780	2	10.5	
	CF 5V	CF 5VUU	CF 5VR	CF 5VUUR														5 100	5 500	1 420	11 600					
6	CF 6	CF 6UU	CF 6R	CF 6UUR	16	11	6	M6×1	8	28	16	—	0.6	4	—	0.3	11	3 630	3 630	2 110	25 000	3 430	1 080	3	18.5	
	CF 6V	CF 6VUU	CF 6VR	CF 6VUUR														6 960	8 530	2 110	12 000					
8	CF 8	CF 8UU	CF 8R	CF 8UUR	19	11	8	M8×1.25	10	32	20	—	0.6	4	—	0.3	13	4 310	4 710	4 710	20 000	4 020	1 370	8	28.5	
	CF 8V	CF 8VUU	CF 8VR	CF 8VUUR														8 130	11 170	4 710	9 000					
10	CF10	CF10UU	CF10R	CF10UUR	22	12	10	M10×1.25	12	36	23	—	0.6	4	—	0.3	15	5 390	6 860	6 860	17 000	4 700	1 670	15	45	
	CF10V	CF10VUU	CF10VR	CF10VUUR														9 510	14 500	7 450	7 500					
10	CF10-1	CF10-1UU	CF10-1R	CF10-1UUR	26	12	10	M10×1.25	12	36	23	—	0.6	4	—	0.3	15	5 390	6 860	6 860	17 000	5 490	2 060	15	60	
	CF10-1V	CF10-1VUU	CF10-1VR	CF10-1VUUR														9 510	14 500	7 450	7 500					
10	CF10K	CF10UUK	CF10RK	CF10UURK	22	12	10	M10×1	12	36	23	—	0.6	4	—	0.3	15	5 390	6 860	6 860	17 000	4 700	1 670	15	45	
	CF10VK	CF10VUUK	CF10VRK	CF10VUURK														9 510	14 500	7 450	7 500					
10	CF10-1K	CF10-1UUK	CF10-1RK	CF10-1UURK	26	12	10	M10×1	12	36	23	—	0.6	4	—	0.3	15	5 390	6 860	6 860	17 000	5 490	2 060	15	60	
	CF10-1VK	CF10-1VUUK	CF10-1VRK	CF10-1VUURK														9 510	14 500	7 450	7 500					

* Without seals, suitable for grease lubrication. In case of oil lubrication, up to 130% of this value shall be permissible, and 70% of this value shall apply for types with seals.

OUTER RINGS TOLERANCE

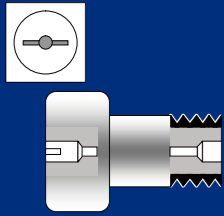
TYPE	Cylindrical outer ring	Crowned outer ring
CF5,CF6	0/-8	0/-50
CF8,CF10,CF10-1,CF12	0/-9	0/-50
CF12-1,CF16,CF18,CF20-1	0/-11	0/-50
CF20,CF24,CF24-1,CF30	0/-13	0/-50
CF30-1,CF30-2	0/-15	0/-50

ACCESSORIES

TYPE	STOP PLUG	RESIN PLUG	NUT
CF5	—	—	Attached
CF6/CF8/CF10/CF10-1	—	φ 4 Attached	Attached
CF12/CF12-1/CF16/CF18	φ 6 Attached	φ 6 Attached	Attached
CF20/CF20-1/CF24/CF24-1/CF30/CF30-1/CF30-2	φ 8 Attached	φ 8 Attached	Attached

CAM FOLLOWERS

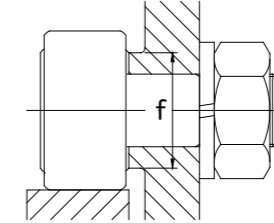
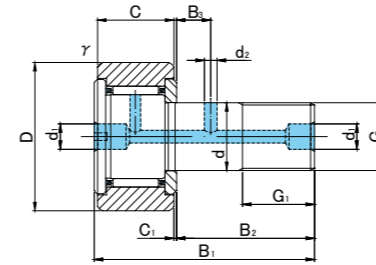
SCREWDRIVER SLOT HEAD



CF



CF.V



CF TYPE

Prepacked Grease

Stud diameter (mm)	h7 tolerance	Designation				Dimensions (mm)														Basic dynamic load rating Cr N	Basic static load rating Cor N	Largest permissible load N	Limiting speed * rpm	Track load capacity		Max tightening torque N·m	Mass g (approx)
		Cylindrical outer ring		Crowned outer ring R500(CF12 ~ CF18) R1000(CF20 ≤)		D	C	d	G	G1	B1	B2	B3	C1	d1	d2	r/min	f min	Cylindrical outer ring N					Crowned outer ring N			
		Without seals	With seals	Without seals	With seals																						
12	0 -0.018	CF12	CF12UU	CF12R	CF12UUR	30	14	12	M12×1.5	13	40	25	6	0.6	6	3	0.6	20	7 940	9 800	9 800	14 000	7 060	2 450	22	95	
		CF12V	CF12VUU	CF12VR	CF12VUUR														13 430	19 700	11 270	6 000					
12	0 -0.018	CF12-1	CF12-1UU	CF12-1R	CF12-1UUR	32	14	12	M12×1.5	13	40	25	6	0.6	6	3	0.6	20	7 940	9 800	9 800	14 000	7 450	2 740	22	105	
		CF12-1V	CF12-1VUU	CF12-1VR	CF12-1VUUR														13 430	19 700	11 270	6 000					
16	0 -0.018	CF16	CF16UU	CF16R	CF16UUR	35	18	16	M16×1.5	17	52	32.5	8	0.8	6	3	0.6	24	12 050	18 330	18 330	10 000	11 200	3 140	58	170	
		CF16V	CF16VUU	CF16VR	CF16VUUR														20 680	37 630	19 800	4 500					
18	0 -0.018	CF18	CF18UU	CF18R	CF18UUR	40	20	18	M18×1.5	19	58	36.5	8	0.8	6	3	1	26	14 700	25 200	25 200	8 500	14 400	3 720	87	250	
		CF18V	CF18VUU	CF18VR	CF18VUUR														25 280	51 350	26 560	3 500					
20	0 -0.021	CF20	CF20UU	CF20R	CF20UUR	52	24	20	M20×1.5	21	66	40.5	9	0.8	8	4	1	36	20 680	34 600	32 140	7 000	23 200	8 230	120	460	
		CF20V	CF20VUU	CF20VR	CF20VUUR														33 120	64 480	32 140	3 500					
20	0 -0.021	CF20-1	CF20-1UU	CF20-1R	CF20-1UUR	47	24	20	M20×1.5	21	66	40.5	9	0.8	8	4	1	36	20 680	34 600	32 140	7 000	21 000	7 150	120	385	
		CF20-1V	CF20-1VUU	CF20-1VR	CF20-1VUUR														33 120	64 480	32 140	3 500					
24	0 -0.021	CF24	CF24UU	CF24R	CF24UUR	62	29	24	M24×1.5	25	80	49.5	11	0.8	8	4	1	40	30 480	52 630	49 500	6 500	34 200	10 500	220	815	
		CF24V	CF24VUU	CF24VR	CF24VUUR														46 550	92 020	49 500	3 000					
24	0 -0.021	CF24-1	CF24-1UU	CF24-1R	CF24-1UUR	72	29	24	M24×1.5	25	80	49.5	11	0.8	8	4	1	40	30 480	52 630	49 500	6 500	39 800	12 900	220	1 140	
		CF24-1V	CF24-1VUU	CF24-1VR	CF24-1VUUR														46 550	92 020	49 500	3 000					
30	0 -0.021	CF30	CF30UU	CF30R	CF30UUR	80	35	30	M30×1.5	32	100	63	15	1	8	4	1	46	45 370	85 060	73 700	5 000	52 600	14 900	450	1 870	
		CF30V	CF30VUU	CF30VR	CF30VUUR														67 620	144 060	73 700	2 200					
30	0 -0.021	CF30-1	CF30-1UU	CF30-1R	CF30-1UUR	85	35	30	M30×1.5	32	100	63	15	1	8	4	1	46	45 370	85 060	73 700	5 000	56 000	16 100	450	2 030	
		CF30-1V	CF30-1VUU	CF30-1VR	CF30-1VUUR														67 620	144 060	73 700	2 200					
30	0 -0.021	CF30-2	CF30-2UU	CF30-2R	CF30-2UUR	90	35	30	M30×1.5	32	100	63	15	1	8	4	1	46	45 370	85 060	73 700	5 000	59 300	17 300	450	2 220	
		CF30-2V	CF30-2VUU	CF30-2VR	CF30-2VUUR														67 620	144 060	73 700	2 200					

* Without seals, suitable for grease lubrication. In case of oil lubrication, up to 130% of this value shall be permissible, and 70% of this value shall apply for types with seals.

OUTER RINGS TOLERANCE

TYPE	Cylindrical outer ring	Crowned outer ring
CF5,CF6	0/-8	0/-50
CF8,CF10,CF10-1,CF12	0/-9	0/-50
CF12-1,CF16,CF18,CF20-1	0/-11	0/-50
CF20,CF24,CF24-1,CF30	0/-13	0/-50
CF30-1,CF30-2	0/-15	0/-50

ACCESSORIES

TYPE	STOP PLUG	RESIN PLUG	NUT
CF5	—	—	Attached
CF6/CF8/CF10/CF10-1	—	φ 4 Attached	Attached
CF12/CF12-1/CF16/CF18	φ 6 Attached	φ 6 Attached	Attached
CF20/CF20-1/CF24/CF24-1/CF30/CF30-1/CF30-2	φ 8 Attached	φ 8 Attached	Attached